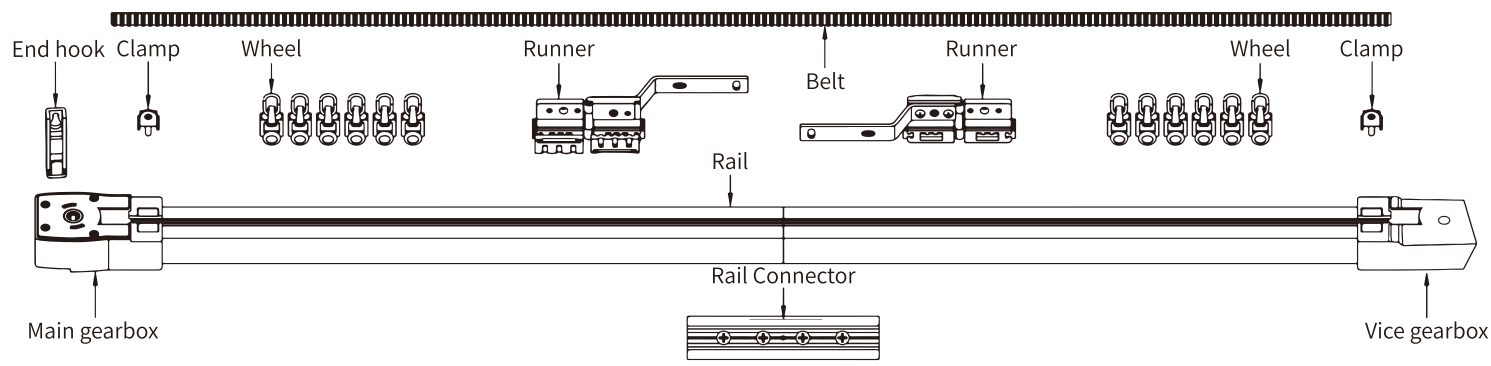
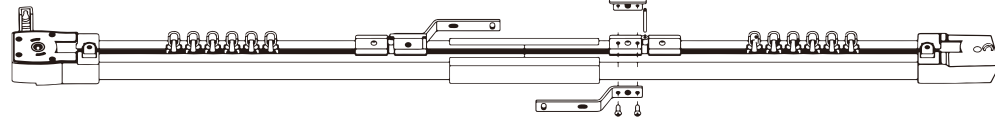


Rail exploded view



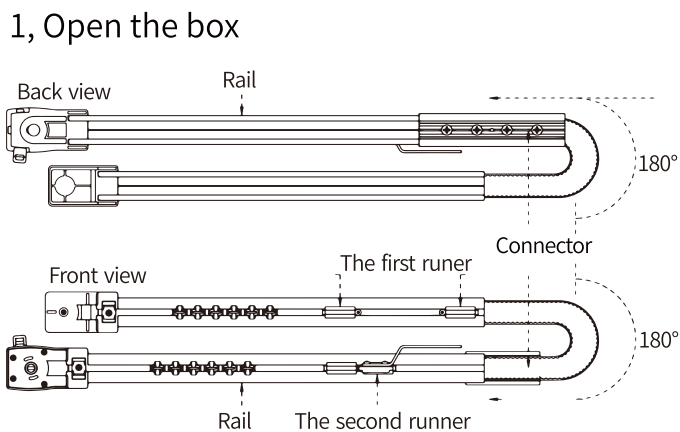
Rail assembling

Cutting dimension of rail = Total length - Main gearbox 69mm - Vice gearbox 48mm

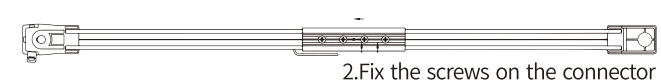
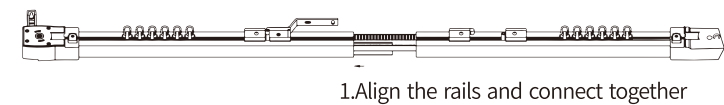


<p>1, Pass the belt through main gearbox</p>	<p>2, Cut the belt</p>	<p>3, Make the 1st mark on the belt</p>	<p>4, Place the first runner</p>
<p>5, Make the second mark</p>	<p>6, Place the second runner</p>	<p>7, Place the wheels and clamp</p>	<p>8, Fix the main gearbox</p>
<p>9, Place the vice gearbox</p>	<p>10, Put on the subassembly of the first runner</p>	<p>11, Place the wheels and clamp</p>	<p>12, Fix the first runner and complete the assembling</p>

Guidance for pre-assembly rail



2, Join the rails by connector



3, Connect and fix the first runner on the rail



4, Put on the ceiling bracket and complete the assembling

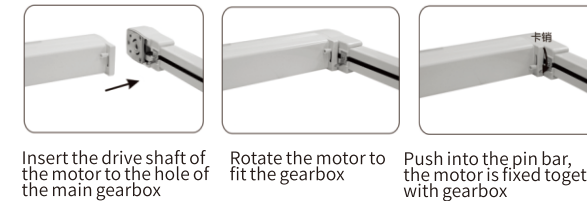
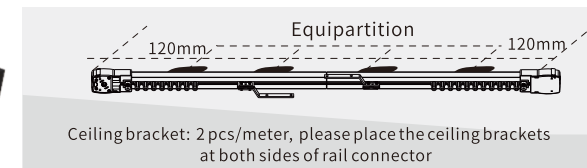
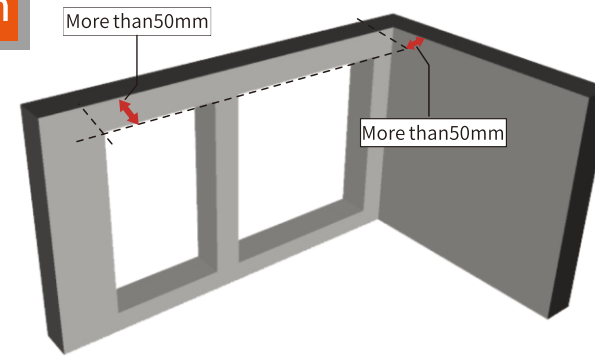


Manual for battery powered smart curtain
please read this manual carefully before using the product!

Cautions

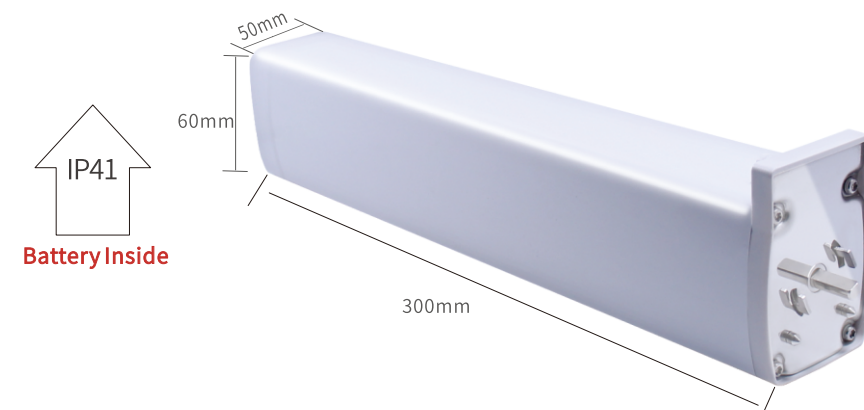
<p>Keep dry</p>	<p>Do not disassemble</p>	<p>Keep away from heat sources</p>
<p>Do not pull too hard</p>	<p>Do not strike, collide and fall</p>	<p>Use after firmly installing</p>

Installation



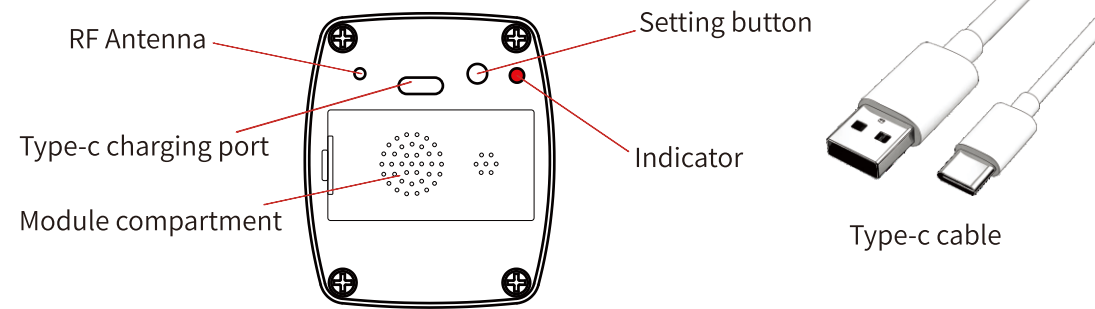
Features

Soft start(cancelable) +stop when blocking + electric stroke +slow start and stop +overtime protection + overcharge protection + remote control + reset + reverse setting + low power alarm + anti-trigger + Tuya smart/Smartlife (optional)



Working voltage: DC 9-12.6V
Charge voltage: 5V 2A
Rated Power: 15W
Battery capacity: 2000mAh
Rated torque: 1.5N · m
Working temp: 0°C~40°C
Overtime protection: 4min
Protection grade: IP41
Insulation class: E
Remote: 433.92Mhz
Zigbee: 2.4GHz
APP: Tuya smart/Smartlife

Charging Instruction

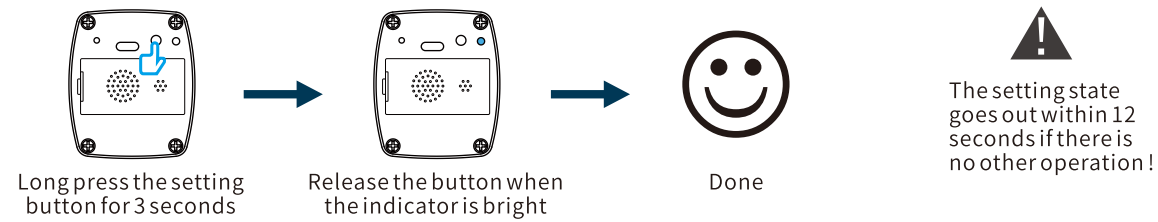


- 1. Most of the 5V phone chargers is compatible;
- 2. Fast Charge Protocol is not supported, but it also can be charged by fast Charger

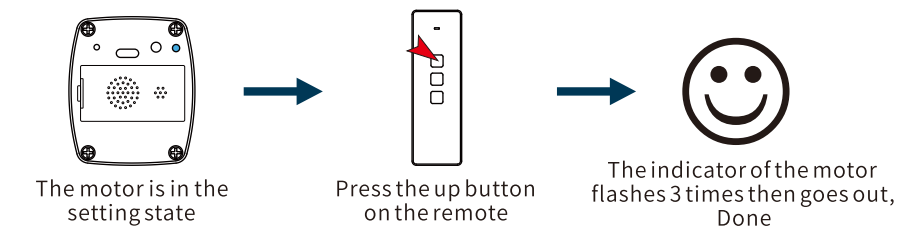
- Notes:
1. Please charge the motor with Type-C cable and make sure the output voltage of the charger is 5V;
 2. The indicator of the motor is red when charging, and goes out when full charging

Settings

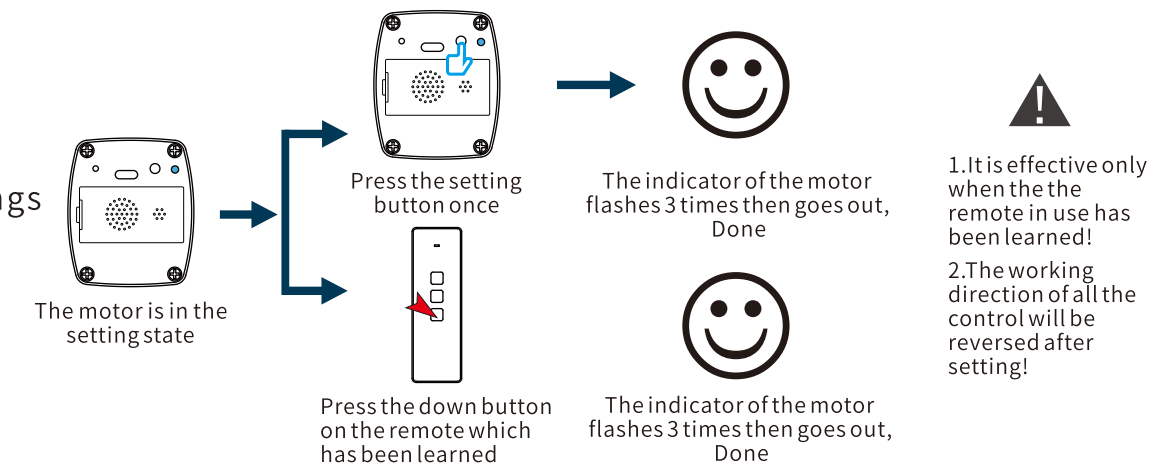
Setting state



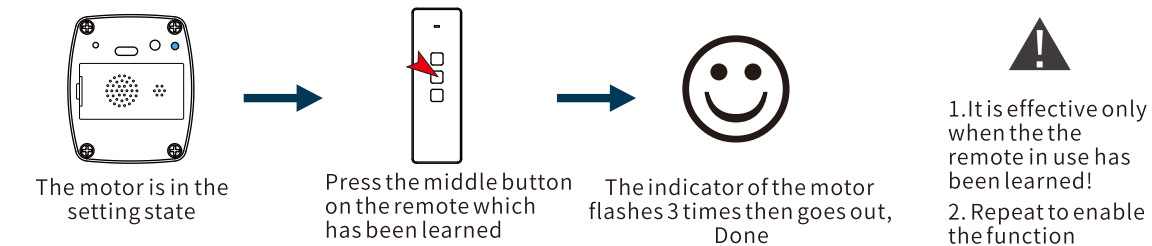
Learn code



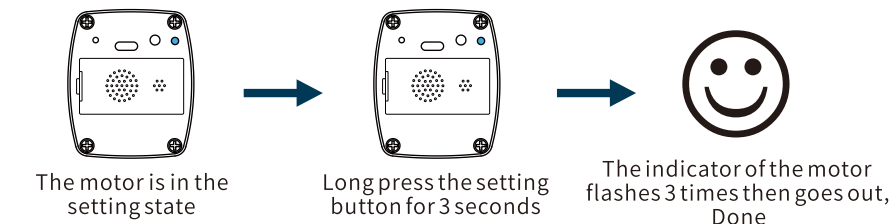
Reverse Settings



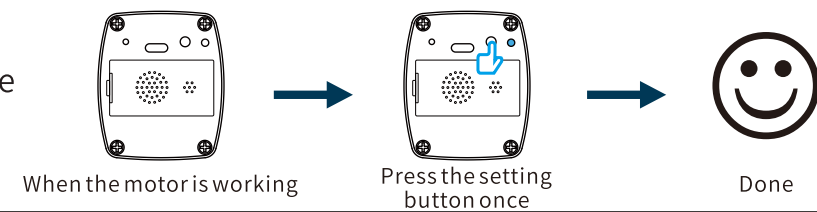
Disable the soft start



Reset (Clear Code)



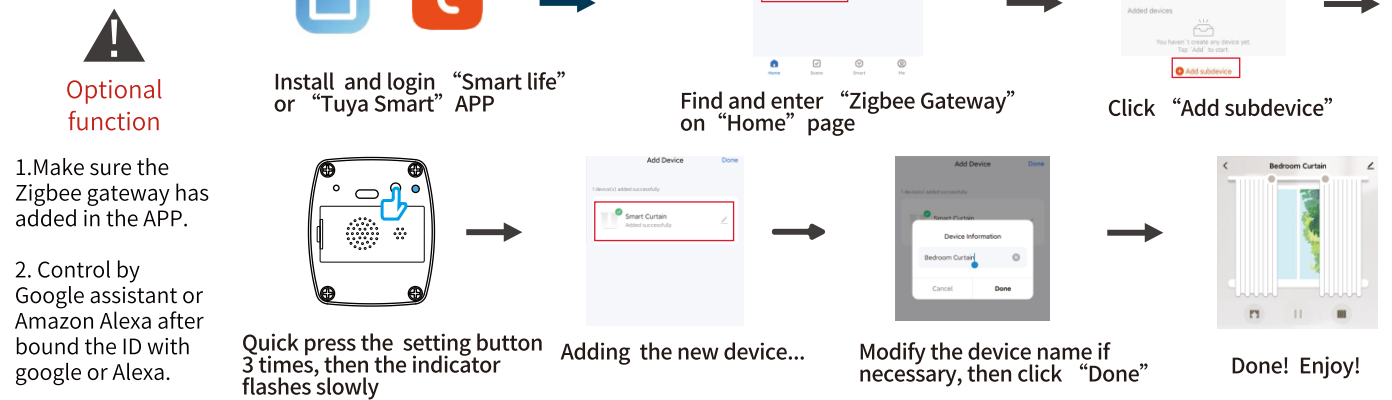
Stop/Pause



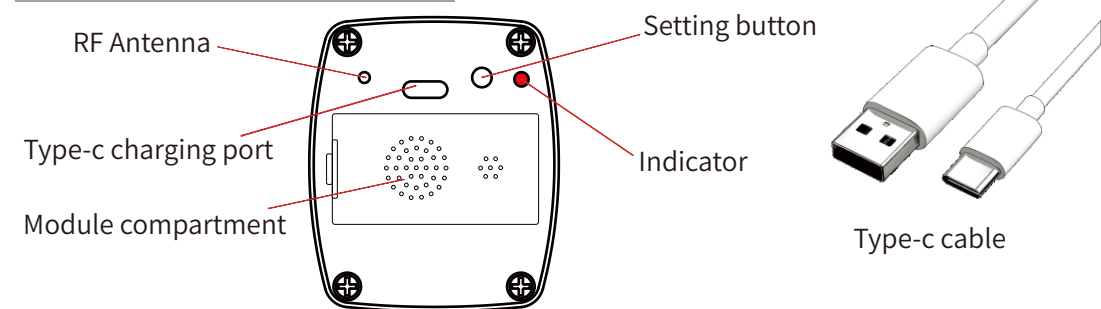
Function description

1. Soft start: When the motor is stopped, quickly pull the pulley in any direction for more than 5cm, and the motor will automatically run to the manual direction.
2. Stop when blocking: The motor will stop working to prevent the damage by blocking.
3. Electric stroke: The runner will slow down and stop before approaching to the terminal.
4. Stroke correction: The system will correct the stroke automatically when a stroke error is occurred.
5. Overtime protection: The motor will stop automatically when no operations for 4 minutes.
6. Over charging protection: The charging will stop automatically when full charged.
7. Low power alarm: The buzzer alarm will indicate when low battery.
8. Anti-trigger: The moving distance of soft start is more than 10cm if no stroke.

Tuya / Smartlife Zigbee



Charging Instruction



- 1. Most of the 5V phone charger is compatible;
- 2. Fast Charge Protocol is not supported, but it also can be charged by fast Charger

Notes:
 1. Please charge the motor with Type-C cable and make sure the output voltage of the charger is 5V;
 2. The indicator of the motor is red when charging, and goes out when full charging

Settings

Setting state

The setting state goes out within 12 seconds if there is no other operation!

Learn code

Reverse Settings

1. It is effective only when the remote in use has been learned!
 2. The working direction of all the control will be reversed after setting!

Disable the softstart

1. It is effective only when the remote in use has been learned!
 2. Repeat to enable the function

Reset (Clear Code)

Stop/Pause

Function description

1. Soft start: When the motor is stopped, quickly pull the pulley in any direction for more than 5cm, and the motor will automatically run to the manual direction.
2. Stop when blocking: The motor will stop working to prevent the damage by blocking.
3. Electric stroke: The runner will slow down and stop before approaching to the terminal.
4. Stroke correction: The system will correct the stroke automatically when a stroke error is occurred.
5. Overtime protection: The motor will stop automatically when no operations for 4 minutes.
6. Overcharging protection: The charging will stop automatically when full charged.
7. Low power alarm: The buzzer alarm will indicate when low battery.
8. Anti-trigger: The moving distance of soft start is more than 10cm if no stroke.

Tuya / Smartlife Zigbee

Optional function

1. Make sure the Zigbee gateway has added in the APP.
 2. Control by Google assistant or Amazon Alexa after bound the ID with google or Alexa.

Quick press the setting button 3 times, then the indicator flashes slowly

Adding the new device...
 Modify the device name if necessary, then click "Done"



www.OneSmartshop.com